



AIR TREATMENT SOLUTIONS



Cassette
42GW



Cassette Idrofan: a 10 year success story



Keys to this success

Over the last 10 years, approximately 600,000 Idrofan units have been sold in Europe. Pure design lines, ease-of-installation and reliability are the keys to the success of this range. Today the cassette continues to be innovative, offering optimal comfort to end-users and installers, and low energy consumption LEC motor solutions.

Choose Carrier quality

Only Carrier is able to offer you a tailor-made product with European standards and 100% Carrier components. Our cassettes are constantly being improved and the fans have been developed by our Carrier UTC experts. The name Carrier is synonymous with quality and service.

Make it simple with Carrier service!

Wherever you are, a competent team belonging to the Carrier network is at your disposal. How? Simply connect to www.carrier.com to find spare parts and all the information you need.



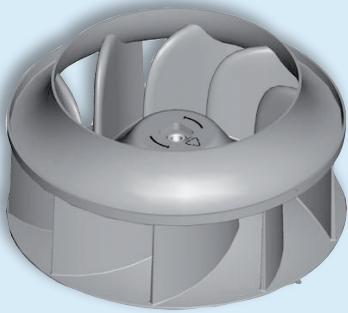
Carrier GREEN



The environment and personal comfort are longstanding priorities for Carrier. All innovations are focused on finding environmentally sustainable solutions and improving personal comfort. This range offers:

- Increased energy savings, meeting requirements for low consumption buildings
- A response to the 2020 target of 20% less CO₂ emissions in the atmosphere
- Innovations that will help reduce your electricity bill by 50 to 70 %!

The reference on the market, innovations included



Quiet efficiency

The new cassette allows for noise reduction, with optional LEC motors that ensure a quieter environment and energy savings.



New enhanced performance

- Energy consumption is reduced by 50 to 70 percent through variable speed LEC motors which continuously adjust the power providing an airflow adapted to the space. The switch to lower power modes results in a reduction in energy consumption.
- Individual comfort is guaranteed with the automatic control of the airflow from 0 to 100% in both cooling and heating modes.
- Noise level is minimized with a new fan design. More ergonomic to reduce noise, the new fan has been designed by Carrier.
- Heating performance is improved and costs reduced with a new 4 pipe coil design that allows for system energy savings.

High reliability & servicability

- Optimized airflow: the electric box has been moved to free space in the cassette and improve noise levels, allowing easy access to all electrical connections from the side of the cassette.
- More reliability and less constraints: the condensate pump is independent. A float detects water and starts the pump if necessary. Everything is automatic and quiet!
- New coil drain pan monobloc improves water drainage, noise absorption, and access to main components.

The Idrofan 42GW offers a wide range of options dedicated to performance and to providing solutions finely adapted to your needs.



Flexible hydronic option: a customized solution for comfort

- Suitable for any configuration and diverse requirements with a wide range of options: 2-way or 4-way valves (3-way valve with integrated bypass), 230-V or 24-V, on/off or modulating valve actuators
- Safety and simplicity thanks to the moulded plastic frame, and anti-condensate shell on the valve body
- Auxiliary water valve drain pan is also available

A wide range of controllers



■ THERMOSTAT A/B

An elegant electronic thermostat with automatic or manual speed controls, automatic or manual summer/winter modes, frost protection function and economy mode.



■ HDB CONTROLLER

Allows unit grouping in a closed capability operation loop using an infrared or wired remote control, and daily time scheduling.



■ NTC CONTROLLER

Allows for control of units with the LEC option. By optimizing the new Carrier algorithms, this communicating controller combines energy savings with optimized comfort.



■ AQUASMART SYSTEM

Touch-screen control of all system components by unit, zone or building occupancy. Centralized control or 24-hour control via the Internet, if available. Optimized energy savings at your fingertips.

Cassette 42GW



Esthetic - comfort - performance

- More than **600,000 units** sold
- **10 years of success**
- **100% of components** made by Carrier
- Noise level **3 dB(A)** quieter
- **50 to 70%** lower consumption



Carrier SERVICE

3 steps to order spare parts

The website www.carrier.com gives you direct access to spare parts, with references, item availability and a simple 3-step order process:

- browse for the item,
- check availability
- download the order form!

Technical data

| 42GW (AC/LEC motors) | | | 200/209 | | | 300/309 | | | 400/409 | | | 500/509 | | | 600/609 | | | 700/709 | | |
|---|-----------------|-------|-----------------|------|------|-----------------|------|------|-----------------|------|------|-----------------|------|------|-----------------|------|------|-----------------|-------|------|
| Fan speed (AC motor Nb) | | | 1 | 2 | 3 | 1 | 2 | 3 | 1 | 2 | 3 | 1 | 2 | 3 | 1 | 2 | 3 | 1 | 2 | 3 |
| Fan speed (LEC motor V) | 2 pipe & 4 pipe | | 10 | 6 | 2 | 10 | 6 | 2 | 10 | 6 | 2 | 10 | 6 | 2 | 10 | 6 | 2 | 10 | 6 | 2 |
| Air flow rate | | m³/h | 660 | 450 | 360 | 735 | 505 | 320 | 900 | 625 | 485 | 980 | 720 | 530 | 1160 | 825 | 500 | 1600 | 1080 | 600 |
| Total cooling capacity | 2 pipe | kW | 2.40 | 1.80 | 1.55 | 4.00 | 2.90 | 1.90 | 4.70 | 3.50 | 2.85 | 6.30 | 4.50 | 3.40 | 7.20 | 5.50 | 3.70 | 9.60 | 6.60 | 4.05 |
| Sensible cooling capacity | | kW | 2.01 | 1.49 | 1.31 | 3.10 | 2.20 | 1.41 | 3.70 | 2.70 | 2.10 | 4.80 | 3.60 | 2.70 | 5.50 | 4.10 | 2.70 | 7.35 | 4.85 | 3.00 |
| Water flow rate (cooling and heating) | | l/h | 413 | 310 | 267 | 688 | 499 | 327 | 808 | 602 | 490 | 1084 | 774 | 585 | 1238 | 946 | 636 | 1651 | 1135 | 697 |
| AC motor Eurovent energy class FCEER | | | D | | | C | | | D | | | C | | | C | | | D | | |
| LEC motor Eurovent energy class FCEER | | | A | | | A | | | B | | | A | | | A | | | A | | |
| Heating capacity | 2 pipe | kW | 3.20 | 2.50 | 2.20 | 5.00 | 4.00 | 2.50 | 6.20 | 4.60 | 3.70 | 8.11 | 6.00 | 4.50 | 10.00 | 7.40 | 4.60 | 13.00 | 9.30 | 5.20 |
| AC motor Eurovent energy class FCCOP | | | D | | | C | | | D | | | C | | | C | | | D | | |
| LEC motor Eurovent energy class FCCOP | | | A | | | A | | | B | | | A | | | A | | | A | | |
| Electric heating capacity | 2 pipe | W | 1500 | | | 2500 | | | 2500 | | | 3000 | | | 3000 | | | 3000 | | |
| Total cooling capacity | 4 pipe | kW | 2.20 | 1.65 | 1.45 | 3.50 | 2.70 | 2.00 | 4.10 | 3.25 | 2.60 | NA | | | NA | | | 9.10 | 6.80 | 3.80 |
| Sensible cooling capacity | | kW | 2.00 | 1.48 | 1.27 | 2.70 | 2.10 | 1.50 | 3.30 | 2.60 | 2.05 | NA | | | NA | | | 7.10 | 5.20 | 2.70 |
| Water flow rate (cooling) | | l/h | 378 | 284 | 249 | 602 | 464 | 344 | 705 | 559 | 447 | NA | | | NA | | | 1565 | 1170 | 654 |
| AC motor Eurovent energy class FCEER | | | E | | | C | | | D | | | NA | | | NA | | | D | | |
| LEC motor Eurovent energy class FCEER | | | B | | | A | | | B | | | NA | | | NA | | | A | | |
| Heating capacity | 4 pipe | kW | 1.90 | 1.44 | 1.24 | 6.37 | 5.10 | 3.60 | 6.80 | 5.80 | 5.00 | NA | | | NA | | | 16.00 | 11.50 | 7.30 |
| Water flow rate (heating) | | l/h | 163 | 124 | 107 | 548 | 439 | 310 | 585 | 499 | 430 | NA | | | NA | | | 1376 | 989 | 628 |
| AC motor Eurovent energy class FCCOP | | | E | | | B | | | C | | | NA | | | NA | | | C | | |
| LEC motor Eurovent energy class FCCOP | | | B | | | A | | | A | | | NA | | | NA | | | A | | |
| Sound power | 2 pipe & 4 pipe | dB(A) | 47 | 37 | 32 | 52 | 44 | 32 | 57 | 48 | 42 | 47 | 40 | 34 | 53 | 46 | 37 | 61 | 52 | 40 |
| Sound pressure (*) | | dB(A) | 47 | 37 | 32 | 52 | 44 | 32 | 57 | 48 | 42 | 47 | 40 | 34 | 53 | 46 | 37 | 61 | 52 | 40 |
| NR value (*) | | | 42 | 32 | 27 | 47 | 39 | 27 | 52 | 43 | 37 | 42 | 35 | 29 | 48 | 41 | 32 | 56 | 47 | 35 |
| Unit dimensions (height x length x width) | 2 pipe & 4 pipe | mm | 298 x 575 x 575 | | | 298 x 575 x 575 | | | 298 x 575 x 575 | | | 298 x 575 x 575 | | | 298 x 575 x 575 | | | 298 x 575 x 575 | | |
| Unit net weight | | kg | 15.0 | | | 16.5 | | | 16.5 | | | 37.0 | | | 39.6 | | | 39.6 | | |
| Grille dimensions (height x length x width) | | mm | 30 x 720 x 720 | | | 30 x 720 x 720 | | | 30 x 720 x 720 | | | 30 x 720 x 720 | | | 30 x 720 x 720 | | | 30 x 720 x 720 | | |
| Grille weight | | kg | 2.5 | | | 2.5 | | | 2.5 | | | 5.0 | | | 5.0 | | | 5.0 | | |

Your retailer:

Based on Eurovent regulations:

Cooling mode (2 & 4 pipes coil): entering air temperature 27°C db/1 9°C wb, entering/leaving water temperature 7/12°C, high fan speed.

Heating mode (2 pipes coil): entering air temperature 20°C, entering water temperature 50°C, high fan speed, water flow rate as cooling mode.

Heating mode (4 pipes coil): entering air temperature 20°C, entering water temperature 70°C, high fan speed, water DeltaT 10°C

(*) Sound pressure level and NR levels based on a hypothetical acoustic attenuation for the room of -9 dB(A)

Electrical heater version is available for all 2 pipe units.

NA : Not Applicable



turn to the experts™



United Technologies

Climate | Controls | Security